

bio•feedback ←

BIOLOGICAL SCIENCES DIVISION SPECIAL LIBRARIES ASSOCIATION Newsletter

Volume 12, Number 1

Winter, 1986

EDITOR'S FEEDBACK

With this issue BIOFEEDBACK begins a new volume (12) and a new editor (Jacque-Lynne Schulman). On behalf of my fellow Division members, I wish to thank Jean for her work and the fine issues she produced. It will be a tough act to follow. I also wish to thank Carolyn Takeuchi who has agreed to serve as Associate Editor of BIOFEEDBACK.

This is your publication. It should reflect what you, the members of the Division are doing, as well as what the Division as an organization within SLA is doing.

Please share with us. Share what you have done, share what your organization is doing, share reports of meetings by other organizations. Send your contributions to the Editor or the Associate Editor. The addresses are listed on the last page of this issue.

The past year as seen major changes in SLA Headquarters. A copy of the new organizational plan is included in this issue. The "new" building is a lovely and yet very functional structure. I hope many of you read its history in the pamphlet sent to all members. We will surely make our own history for the Association in this building. With Gramm-Rudman, A-76, A-130 and the many federal actions which impact all libraries, even those in commercial organizations, SLA is very well located to have a vision of events affecting (special) libraries and a position from which to make our voices heard. As a member of the Washington, DC Chapter, I am proud that our Chapter helped fund the

building and can see a tangible result in the Information Resources Center named for the Chapter.

Jacque-Lynne Schulman

SUPER SURVEY IS COMING

The Association has awarded a contract to the Center for Organizational Development in Rochester, NY, to design a membership survey. Dubbed "Super Survey" by Association staff, the questionnaire will be mailed in the Spring to 4,000 randomly selected members. If you are one of the lucky third of the membership to receive this survey, please fill it out completely and return it by the date specified. This is your chance to be counted!

NEW DIVISION OFFICERS TO BE ELECTED

This year Division members will choose a new Chair-Elect and Secretary-Treasurer. The position of Chair-Elect is a three year commitment, for the individual elected serves as Chair the second year and Past Chair the third. The Secretary-Treasurer serves for two years.

Michael Kronenfeld (South Carolina Department of Health) is Chair of the Nominating Committee. The Committee includes Jean Crampon, Doris Goldstein, and Elisabeth Davis. If you would like to place a name in nomination, please call Mike at 803/758-5448 by March 15. Ballots will be sent by separate mailing around April 1st.

STUDENT CONFERENCE AWARD TO BE MADE

Each year the Biological Sciences Division is pleased to help support a library school student attend the Annual Meeting. The purpose of the award is to foster interest in biological sciences librarianship and to enable the student selected to meet and develop contacts among biological sciences librarians. The Division supplies free room in the Division Suite, free tickets to Division-sponsored events, and a \$275.00 travel stipend.

To be eligible, a student must:

1. Be a member of SLA
2. Write a 300 word essay discussing a particular challenge or challenges/problems facing special librarians, with emphasis on biological sciences librarianship
3. Supply the name of the graduate school attended, the anticipated date of graduation, and a day-time telephone number.
4. Supply a reference from a member of his/her library school faculty.

All of the above must be supplied to MARLENE BOBKA, chair of BSD's Public Relations Committee, no later than April 4. The winning student will be notified around May 1st. Letters describing the award are being sent to library schools but if you are an eligible student or would like to notify a good candidate, Marlene's address is:

3608 Carey Lane
Wheaton, Maryland 20902
301/881-0410

MESSAGE FROM THE CHAIR

Highlights of the 1986 Winter Meeting
Nashville, January 28-31

BOARD MEETINGS

Report of the Executive Director,
David Bender

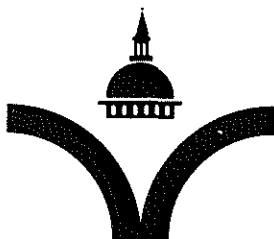
---Association staff have prepared an article on SLA history for the 1986 Bowker Annual

---The Board has approved a new Association staff position, with the title Director of Government Relations and Fund Development, to be filled in April. A copy of the new Organizational Chart appears in this issue.

---New building: the general contractor is now finished with all renovations to the new building; arrangements to rent the top two floors are underway; regulations for use of the building by outside organizations are being drawn up; the official hours of the Association are 8:30 am to 5:00 pm EST, Monday through Friday; the Information Resources Center, managed by Tobi Brimsek, is now well established and will accept inquiries

---SLA will publish several special "theme" issues of Special Libraries; planned for Fall 1986 is one on library education

---For the 1986 meeting of IFLA (International Federation of Library Associations) SLA will present a three-day pre-conference on special libraries; a Second International Conference on Special Libraries is being considered for the year 2000

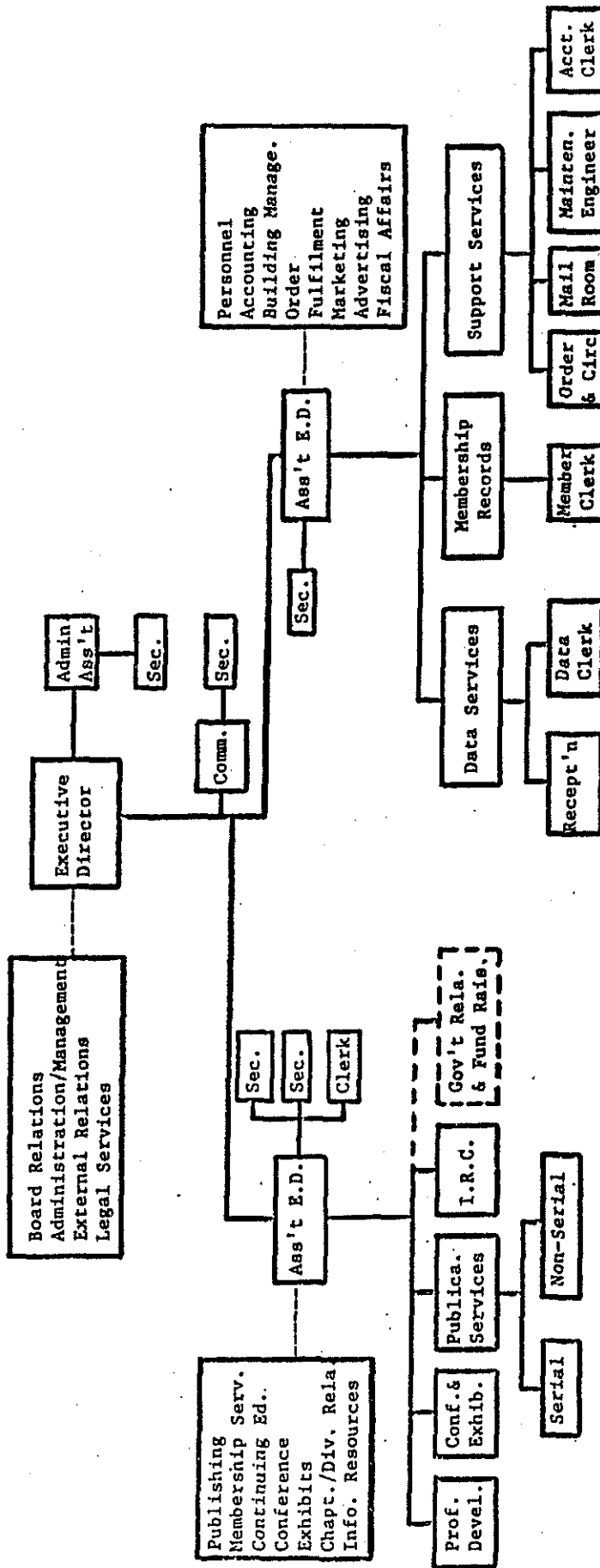


"Excellence in the World of Information"

SPECIAL LIBRARIES ASSOCIATION
77th ANNUAL CONFERENCE
Boston, Massachusetts June 7-12 1986

Special Libraries Association

ORGANIZATIONAL CHART



March 1, 1985
Rev. April 26, 1985

Treasurer's Report

---This past year was a good one for the Association and a surplus in excess of \$17,000 is anticipated. The Board voted to allocate \$15,000 to the General Reserve Fund and any amount available over that to the Building Reserve Fund. Expenses relating to the new headquarters building in Washington totaled \$1.6 million, \$1.1 for the building itself.

Membership Status

---As of January, there are 12,473 total members of the Association. The North Carolina Chapter submitted a recommendation to the Board regarding joint membership for married couples. The Board referred this issue to the Special Committee on Membership Development, to be reported on at the June 1986 meeting.

Sexist Language

---Association staff are preparing guidelines for the elimination of sexist language from all SLA publications. These are guidelines only because anything more formal would require a By-Laws change.

Awards Committee

---Vivian Arterberry, David Bender, and James Tchobanoff received the SLA President's Award for their work on the Long Range Plan. The Board approved a recommendation by the Committee that a plaque of recognition be developed for retiring Board members. The Board also approved the establishment of the designation "Fellow" to be conferred upon distinguished leaders of the Association.

SLA Publications Catalog

---The Board approved the recommendation of the Joint Cabinet that Chapter and Division publications may be included in the SLA publications catalog at the request of the relevant Chap-

ter/Division. Sales of these publications remain the responsibility of the Chapters/Divisions.

Association Structure

---The Board approved the establishment of a committee to look into the Association structure, with a report due at the 1988 Winter Meeting.

Future Meeting Sites

---The Board approved a motion regarding the location of future annual meetings in high population and high revenue generating cities. St. Louis was selected for the 1990 Winter Meeting.

State of the Art Conferences

---SLA is planning to sponsor a series of State-of-the-Art conferences, completely separate from annual conference themes. These meetings will be two - three days in length, limited to approximately 150 participants, have a registration fee in the \$100 range, and most likely be held in Washington, DC due to staff logistics. More information will be forthcoming as plans progress.

DIVISION CABINET/JOINT CABINET MEETINGS

Division Symbols---The Association will no longer supply the colorful Division symbols previously made available at annual meetings. (Our BSD symbol is the heart. Because we feel that this means of easily recognizing Division members is important, we will supply our own for distribution in Boston, probably at the Division Suite.)

Membership Directory---In order to reduce costs, SLA did not include Division and Chapter membership lists in this year's Who's Who in Special Libraries. Because the Cabinet felt that these were very important, a motion passed that these lists or indexes to them should be included in future editions.

Slide Presentations---SLA has two slide presentations available for loan to Divisions and Chapters: "Special Libraries" and the "Long Range Plan."

By-Laws---Amending the SLA By-Laws has not been possible in recent years because a vote of 40% of the membership is required. Even an amendment to reduce this percentage failed to pass! Because there are several important issues facing the Association that would require By-Laws change, the Joint Cabinet approved a motion that recommends the Board give high priority to gaining acceptance of a reduction in the percentage required.

New Committee---The Division Cabinet approved the formation of a committee to produce suggestions for involving those Division members who cannot attend annual meetings.



"Excellence in the World of Information"

SPECIAL LIBRARIES ASSOCIATION
77th ANNUAL CONFERENCE
Boston, Massachusetts June 7-12 1986

Boston, 1986

The Biological Sciences Division has planned events for every day of the Boston annual meeting:

Monday afternoon---a co-sponsored session on "Socioeconomic Trends and the Provision of Information"

Tuesday morning---BSD has provided speakers for the General Session on biotechnology and bioethics

Tuesday evening---Division annual business meeting

Wednesday---luncheon

Thursday---a co-sponsored field trip to Woods Hole

The preliminary programs should be mailed to you in March.

Association staff expect attendance to reach 5,200. Exhibit space is already sold out. Hope to see you there!

SLA 1987 - ANAHEIM

It's not too early to be thinking about the 1987 annual meeting to be held at the Anaheim Convention Center. The theme is "Global Information Access---Expanding Our World." Beth Paskoff, current Chair-elect of BSD, is already working hard on the Division program. Please call her with any ideas.

Please feel free to call me at any time with new ideas/suggestions for the Division.

Karen Patrias
301/496-6097

BSD PEOPLE NEWS....

Myra Russell is now Head of the Bio-Agricultural Library at the University of California, Riverside.

Michael Kronenfeld reviewed EPA Index: A Key to US Environmental Protection Agency Reports and Superintendent of Documents and NTIS Numbers in Bulletin of the Medical Library Association 73(4): 397-398, October 1985

M. Sandra Wood reviewed Abstracts and Indexes in Science and Technology: A Descriptive Guide in Bulletin of the Medical Library Association 73(4):398-399, October 1985

Julia Faust reviewed Library Overdues: Analysis, Strategies and Solutions to the Problem in Bulletin of the Medical Library Association 73(4): 401-402, October 1985.

Elaine Graham is now Associate Director, Pacific Southwest Regional Medical Library Service (PSRMLS), in the UCLA Biomedical Library

Dorian E. Martyn is Head of the Learning Resources Center at the Louis Calder Memorial Library of the University of Miami School of Medicine

BSD PEOPLE NEWS... (cont.)

Rita Fisher returned in December from Jordan, where she was a library consultant for seven weeks on the Jordan Valley Agricultural Services Project, sponsored by the US Agency for International Development and Washington State University

J. Deborah Ludwig has taken a position with the Loussac Public Library in Anchorage, Alaska

Welcome to the following new BSD members:

Bonne J. Starks
Tucson, Arizona

Lynette J. Johnson
American Medical International
Beverly Hills, California

Dorothy H. Desimone
Needham, Massachusetts

Jon W. Martin
National Marine Fisheries Service
Pascagoula, Mississippi

Barbara Lee
Worcester Foundation Experimental Biology
Shrewsbury, Massachusetts

Frank B. Williams, Jr.
Nashville, Tennessee

Lisa H. Jacob
Chicago, Illinois

SPOTLIGHT ON ...

CDC LIBRARY

Centers for Disease Control

The Communicable Disease Center was established on July 1, 1946, to continue certain of the activities of the Office of Malaria Control in War Areas and to perform field investigations in the control of communicable disease. This arm of the Public Health Service was located in Atlanta, Georgia. Within the Center were designated such divisions as Epidemiology,

CONTRIBUTORS

Herewith deadlines for BIOFEEDBACK:

Issue Date	Deadline
Spring, 1986	April 1, 1986
Summer, 1986	July 1, 1986
Fall, 1986	October 1, 1986

Contributions for BSD People News and Spotlight On should be sent to:

Carolyn Takeuchi
Owen Science and Engineering Library
Washington State University
Pullman, Washington 99164-3200
509/335-2671 or 335-8100

SPECIAL LIBRARIES ASSOCIATION assumes no responsibility for the statements and opinions advanced by the contributors to the Association's publications. Editorial views do not necessarily represent the official position of Special Libraries Association. Acceptance of an advertisement does not imply endorsement of the product by Special Libraries Association.

Laboratory, Entomology, Engineering and Technical Development, and Training. At the very onset, a separate division was designated the Library and Reports Division. A librarian, Nelle Barmore, was appointed, and as a result of aggressive efforts, the nucleus of a collection was started. Her mission was to develop a collection of all books and periodicals pertinent to communicable diseases found in the United States and its outlying possessions. Her directive was "to maintain a reading library for investigators, instructors, and students of communicable disease, research and control." After

SPOTLIGHT ON ...

(cont.)

only four months, she was able to report a card catalog containing 1,4000 entries housed in a twelve-drawer catalog. This has grown to over 85,000 entries housed in 144 drawers. Since other universities close by had strong collections in medicine and engineering, early attempts were to build the CDC collection in the fields of medical entomology and parasitology. To these subject areas were added those materials in epidemiology, bacteriology, mycology, laboratory medicine, and communicable diseases. By the end of 1951, the collection had passed the 10,000 mark.

As the Center continued to grow and expand into others fields, the collection began to add books in venereal diseases, tuberculosis, hepatitis, and poliomyelitis. By the end of the 1950's, the CDC had the responsibility for investigation of all infectious diseases. With the addition of such programs as family planning, immunization, pesticides, and malaria and smallpox eradication, impetus was given to the collection of materials in those fields. After the CDC became a full-fledged agency of the Public Health Service, its responsibilities included occupational and environmental safety and health, lead-based paint poisoning, health education, and dental disease prevention. More recent involvement in Legionnaires' Disease, toxic shock syndrome, and acquired immune deficiency syndrome has served to further broaden the collection.

The card catalog, then, reflects the areas in which the CDC has had a strong commitment. For example, the CDC Thesis Collection reflects the agency's strong commitment to education and training from its very inception, and is well developed in areas which emphasize public health and preventive medicine. The Public Health Service began a numbered series of publications in the late 1940's and continued this series until the early 1970's. Many of these were designed for the general public. The library's collection contains a fairly complete file of these publications which are accessible by number,

title, subject, and author entries. The library also tries to acquire all the publications issued by the World Health Organization since personnel of the CDC and the World Health Organization work closely on many programs. No attempt was made to intentionally acquire foreign language imprints or journal articles. Two separate catalogs contain the cards for the collection. They are divided by an Author/Title Catalog and a Subject Catalog. The Author/Title Catalog includes personal authors, editors, corporate entries, series, and titles for monographs, monographic series, and analysed series. These cards are arranged alphabetically. There is a separate section of this catalog with abbreviated entries for the library's holdings of Public Health Service publications, arranged by title and publication number. Only National Library of Medicine Medical Subject Headings (MeSH) are used in the subject catalog. There are many geographic subject heading cards in this catalog, reflecting the CDC's interest in international health. The classification scheme is that of the National Library of Medicine for all medical books. The Library of Congress classification is used for others.

In addition to traditional reference services, the library staff performs on-line searching of a number of databases. The most frequently used is the MEDLINE database and related files from the National Library of Medicine. Other frequently used databases are LEXIS-NEXIS-MEDIS from Mead Data Central and databases available from Bibliographic Retrieval Services and Dialog. Interlibrary loans are acquired from a variety of sources using NLM's Regional Medical Library network as well as the Online Computer Library Center's ILL system. Although many of the library operations, Cataloging and Serials, are accomplished by means of a computer at present, there are plans to automate Circulation and Acquisitions within the coming year for a totally integrated library system.

The library's clientele are primarily

SPOTLIGHT ON ...

(cont.)

CDC scientists, physicians, and laboratory staff but also include the many visitors and other health professionals who come to CDC for laboratory and epidemiologic training. The Communicable Disease Center, now the Centers for Disease Control, has not been restricted to coping with national health problems. Major international health agencies such as the World Health Organization, the Agency for International Development and the Pan American Health Organization have received training, technical aid, and resources from the CDC. The library collection will continue to grow in support of these various activities.

Mary Alice Mills
 Director, CDC Library
 Centers for Disease Control
 1600 Clifton Road
 Atlanta, Georgia
 404/329-3396

Biological Sciences Division
 Special Libraries Association
 % Jacqu-Lynne Schulman
 5964 Ranleigh Manor Drive
 McLean, Virginia 22101

BIOFEEDBACK is the bulletin of the Biological Sciences Division of the Special Libraries Association. Please send your comments, complaints, ideas, suggestions, etc. regarding BIOFEEDBACK to the Editor at the address below or call her at 703/527-2627.

CONTENTS

Editor's Feedback.....1
 Super Survey.....1
 Nominations.....2
 Student Conference Award.....2
 Message From the Chair.....2-5
 SLA Headquarters Organization.....3
 Annual Meeting Plans.....5
 BSD People News.....5-6
 Contributors.....6

Address Correction Requested