

---

# Biofeedback

*Biological Sciences Division  
Special Libraries Association*

Volume 17, Number 4  
Spring 1992  
ISSN 1060-2488

---

## Inside

*And the Winner Is ...*

*Biological Sciences Division  
Program for San Francisco*

*Mission Cincinnati - 1993*

*Natural History Caucus*

*New Australian Natural History  
Books*

*Works of Darwin on CD-ROM*

*New Member Profiles*

*New Members and Updates*

*Job Announcements*

## Chair's Report

*Cami L. Loucks*

Momentum is gathering for our Annual Meeting in San Francisco. We have a wonderful lineup of speakers and events this year, and I hope that you have had a chance to mark your preliminary programs to be sure that you do not miss any of them. This year our Division meetings and open houses will be held in special function rooms rather than in a suite. Check your final program for details.

### THE HUMAN AND PLANT GENOME PROJECTS

A great crowd is expected at our first biennial Biotechnology Roundtable. This roundtable will be held in the convention center immediately following the opening session. Four divisions are co-sponsoring this event: Biological Sciences, Chemistry, Pharmaceuticals, and Food and Agriculture. We have arranged for refreshments to be served at this event to make everyone comfortable while learning new and exciting information about the United States Human Genome Project and the United States Plant Genome Project. At this time in history there is no more relevant or no more rapidly growing discipline than genetics research. Already we have seen the development of the "stay crisper longer" celery stick, and discoveries in clinical medicine, such as the genes that are suspected causes of muscular dystrophy, cystic fibrosis, Marfan's syndrome, and others. Literature reveals that the Human and Plant Genome Projects will affect each and every one of our lives in the same way that the U.S. Space Program has brought us useful tools, foods, and medicines. Make this program a must on your calendar and encourage others to attend. Our speakers are world renowned in the fields of biotechnology, research, and database development.

Please give our sponsors of this event a special thank you for their support: Chemical Abstracts Service, Pergamon Press, Springer-Verlag New York, DIALOG Information Service, The Faxon Company, VCH, and CD Plus, Inc.

*continued on page 2*

---

continued from page 1

## THE GOLDEN GATE PARK TOUR

Set your sights high for a wonderful day at Golden Gate Park on Thursday, June 11. In addition to the preliminary program (p. 59), see the previous issue of *Biofeedback* for complete information on this tour of the Strybing Arboretum and Botanical Gardens and the California Academy of Sciences.

## DIVISION NEWS

Rita Fisher, Secretary-Treasurer, will be unavailable after May 12 until the San Francisco conference begins. Anyone needing her services should try to reach her prior to May 12.

The Nominations and Elections Committee and the Student Award Committee have each done a fine job in identifying excellent candidates. Our appreciation is extended to both committees.

## NEWS FROM THE WINTER MEETING

Check your *Specialist* for the various proposals brought before the Board at the Winter Meeting and let me know if there are any opinions or questions you have that you feel need to be addressed as a division. Some of the issues center around bylaws changes affecting sexist language, percent change on return of mail ballots, and dues. I am pleased to note that this year the Board consented to a nominal grant to the European Chapter to help underwrite an international library conference.

## CALL FOR NEW COMMITTEE MEMBERS & COMMITTEE ANNUAL REPORTS

Next year's committees will be needing replacements as members rotate on to other endeavors. Please let me or Renee Bush know of your desire to become active on a committee. Annual reports from each committee chair were due in April.

## SAN FRANCISCO ANNUAL CONFERENCE

*Disaster Preparedness for Libraries* is the luncheon program we are offering, and what better setting than in San Francisco!

*Chemistry for the Non-Chemist* promises to be packed with information and vocabulary to assist those of us who deal with the sciences to build upon our knowledge base.

*Putting Biotechnology to Use at the Kesterson Reservoir* is a fascinating account of how biotechnology is able to help in the struggle to clean the environment and to keep wildlife safe.

Open houses are being held Sunday, Monday, and Tuesday, and in combination with the Environment & Resource Management and Chemistry Divisions. Please plan to join us and meet old friends and new.

\*\*\*\*\*

## And The Winner Is ...

The ballots have been returned and the results of this year's BSD election have been tabulated, and the new officers of the Division are:

*Chair-Elect* - Jo Anne Boorkman

*Secretary-Treasurer* - Joan DeFato

Congratulations and best wishes to Jo Anne and Joan. Be sure to make it a point to meet them in person at the SLA conference next month.

### Biofeedback

Biological Sciences Division  
Special Libraries Association

Vol. 17, No. 4

Spring 1992

Special Libraries Association assumes no responsibility for the statements and opinions advanced by contributors to the Association's publications. Editorial views do not necessarily represent the official position of the Special Libraries Association. Acceptance of an advertisement does not imply endorsement of the product by Special Libraries Association.

The newsletter is published four times a year: February, May, August, and November. Deadline for submitting materials is the fifteenth of the month prior to publication.

Editor: Adam Schiff, California Academy of Sciences Library, Golden Gate Park, San Francisco, CA 94118; 415/750-7104; FAX: 415/750-7106; BITNET: ASCHIFF@UCBCMSA

Assistant Editor: Steven L. Sowell, Biology Library, Indiana University, JH A304, Bloomington, IN 47405; 812/855-9792; FAX: 812/855-6612; BITNET: SOWELL@IUBACS

**Special Libraries Association  
Annual Meeting**

**San Francisco  
June 6-11, 1992**

**Biological Sciences Division  
Program**

**Sunday, June 7**

7:30 - 9:00 am 1991/92 Executive Board Meeting

3:00 - 5:00 pm 1992/93 Executive Board Meeting

5:30 - 7:00 pm ACS Reception. Co-hosted by  
Chemistry and Environment & Resource  
Management Divisions. Sponsored by American  
Chemical Society.

**Monday, June 8**

10:30 - 1:00 pm The Human and Plant Genome  
Projects

1:30 - 3:00 pm Chemistry for the Non-Chemist

4:30 - 6:00 pm Natural History Caucus Meeting

5:30 - 7:00 pm Open House with Chem & ERMD

**Tuesday, June 9**

1:30 - 3:00 pm Putting Biotechnology to Use at  
Kesterson Reservoir

4:30 - 5:30 pm BSD Annual Business Meeting

5:30 - 7:00 pm Open House with Chem & ERMD

**Wednesday, June 10**

7:30 - 9:00 am 1992/93 Executive Board Meeting

11:30 - 2:00 pm Luncheon Program: Disaster  
Preparedness for Libraries (ticketed program)

**Thursday, June 11**

9:00 am - 5:00 pm Field Trip: Golden Gate Park  
Tour (ticketed program)

**Mission Cincinnati - 1993**

*Renee Bush*

The SLA Winter Meeting in Clearwater, Florida, last January brought the Division Planners for the 1993 Annual Conference in Cincinnati together for the first time. I am pleased to report that a few BSD-sponsored programs are beginning to take shape. Thanks to the many division members who responded to our survey, we have several excellent ideas to work with for additional programs. I will be reporting on the development of our programming for '93 in forthcoming issues of *Biofeedback*.

One of several groups that contribute to the success of our annual conferences is the Local Planning Committee. This group plans and helps host the pleasant and stimulating BSD Open Houses and also assists with making some of the other local arrangements. We need volunteers for the committee, which must include at least one person from the Cincinnati area to act as chair. If you would like to meet more of your colleagues and experience the satisfaction that comes from bringing our plans to fruition, please volunteer to join us!

Renee Bush, Chair-Elect  
(716) 636-2947 office  
(716) 636-3719 fax  
SFEFANG@UBVMS.BITNET

*Yes, I want to serve on the Local Arrangements  
Committee for 1993 Annual in Cincinnati!*

Name: \_\_\_\_\_

Address: \_\_\_\_\_  
\_\_\_\_\_  
\_\_\_\_\_

Phone: \_\_\_\_\_

Fax: \_\_\_\_\_

E-Mail: \_\_\_\_\_

*Return to: Renee Bush, Science and Engineering Library,  
Capen Hall, SUNY at Buffalo, Buffalo, NY 14260*

*This new book will help you evaluate your biomedical serials collection!*

# Making Sense of JOURNALS IN THE LIFE SCIENCES

**NEW  
BOOK!**

Making Sense  
of Journals  
in the  
**LIFE  
SCIENCES**

**Tony Stankus, MLS**

Science Librarian, Science Library, College of the Holy  
Cross, Worcester, Massachusetts

## **RAVE REVIEWS FOR THE BOOK!**

*"Tony Stankus has produced a thoroughly researched and well-documented reference work. At this current time of shrinking budgets and periodical inflation, this book will be the standard by which librarians and faculty re-examine journal subscriptions.*

**A REQUIRED PURCHASE FOR BOTH COLLEGE AND UNIVERSITY COLLECTIONS."**

Charles F. Priore, Jr., MLS, Associate Science Librarian,  
Carleton & St. Olaf Colleges

**"THIS BOOK IS A MUST FOR THOSE LIBRARIANS CONCERNED ABOUT THEIR BIOMEDICAL SERIALS COLLECTIONS. The historical development of biomedical research is cleverly traced by focusing on the scientists and journals of each branch of biology. There is a wealth of information on the roles that each prominent journal plays today. You did not learn this in library school and you probably have not mastered it on the job either. Tony Stankus has."**

Frank R. Kellerman, MSLS, Biomedical Reference Librarian, Brown University/Instructor, University of Rhode Island, Graduate School of Library and Information Studies

**"This review of journals in the life sciences is practical and instructive. Each chapter begins with a very readable historical sketch of an area in the life sciences and concludes with well-explained journals selections. Written for librarians with little or no science background, this will be A HELPFUL COLLECTION DEVELOPMENT TOOL AND AN EXCELLENT INSTRUCTIONAL VEHICLE ABOUT THE LIFE SCIENCES."**

Rachelle Karp, MLS, PhD, Associate Professor,  
Clarion University of Pennsylvania

- Outside US/Canada/UK/Japan, please add 15% to book total.
- In US, please add \$2.75 for first book and \$1.00 for each additional book for postage and handling.
- Outside US, please add \$3.75 for first book and \$1.00 for each additional book for postage and handling.
- New York residents, please add appropriate sales tax after postage and handling.
- Please add 7% for Canadian G&S tax.
- If paying in Canadian or Australian funds, please add current exchange rate.

This companion book to **Making Sense of Journals in the Physical Sciences** extensively

covers the field of scientific journals in the life sciences with a strong biographical and historical approach to explaining their development. Written to aid those who see their budgets growing smaller while the price of serials skyrockets, this invaluable guide describes the life sciences journals through the research traditions that have given birth to them. The leading titles are compared and contrasted, indicating competitive advantages and relative cost efficiency. The chapters are illustrated with many easy-to-read graphs for ease in comparative evaluation.

With this book in hand, the librarian has an opportunity to go beyond the checking of other works, which are often basically accurate, but not particularly illuminating lists. This book enables the librarian to talk about more than just prices; it enables the librarian to approach the faculty member with background which that researcher him/herself needs to judge journals: Which competing journals have the highest U.S. participation? Which concentrate the best European, Canadian, and Japanese work? Which are most cited? The librarian can then add information from the cost-analysis concerns he or she faces: Which journals publish the most papers, given their costs, and which journals seem most widely subscribed to today?

Serials and science librarians, particularly those who are new or would welcome a refresher to the shifting alliances and agendas of specialty journals in the life sciences, will benefit greatly from **Making Sense of Journals in the Life Sciences**.

## **CONTENTS**

Introduction: A Working Guide From a Working Librarian for Working Librarians  
Journals of Biology: From Molecules to Embryos  
Journals of Biology: the Physiology and Pharmacology of Adult Organisms in the Laboratory  
Journals of Biology: Evolution, Ecology, Ethology, and Environment

(Monographic supplement No. 8 to *The Serials Librarian*. Please note that this supplement is not a part of the regular journal subscription.)

\$39.95 hard. ISBN: 1-56024-181-0.

Available Summer 1992. Approx. 241 pp.



**CALL OUR TOLL-FREE NUMBER:**  
**1-800-3-HAWORTH**  
1-800-342-9678 / US orders only / 9am-5pm EST

**FAX YOUR ORDER TO US:**  
**607-722-1424**



**The Haworth Press, Inc.**

10 Alice Street, Binghamton, New York 13904-1580

## Natural History Caucus

The Natural History Caucus will meet for the first time as an official caucus of SLA in San Francisco on Monday, June 8, from 4:30 to 6:00 p.m. At this annual business meeting, caucus members will discuss options for future products, projects, and programming. Members interested in an unofficial tour of the new Biodiversity Resource Center of the California Academy of Sciences Library will be encouraged to sign up during this meeting. Membership in the Caucus is open to anyone in SLA. Annual dues are \$6.00.

## New Australian Natural History Books

*An Atlas of Queensland's Frogs, Reptiles, Birds and Mammals*, ed. by Glen J. Ingram and Robert J. Raven. Brisbane: Queensland Museum, 1991. 391 pp. ISBN 0-7242-4626-6.

*Butterfly Conservation*, by T.R. New. South Melbourne, Vic.: Oxford University Press, 1991. ISBN 0-19-553228-7.

*Insects as Predators*, by Tim New. Kensington, NSW: New South Wales University Press, 1991. ISBN 0-86840-276-1.

*Introduced Animals and Plants of Australia*, by Gary A. Twyford. Balgowlah, NSW: Reed Books, 1991. ISBN 0-7301-0361-7.

*Kimberley Rainforests of Australia*, ed. by N.L. McKenzie, R.B. Johnston, and P.G. Kendrick. Chipping Norton, NSW: Surrey Beatty & Sons, 1991. 490 pp. ISBN 0-949324-37-X.

*Riversleigh: The Story of Animals in Ancient Rainforests of Inland Australia*, by Michael Archer, Suzanne J. Hand, and Henk Godthelp. Balgowlah, NSW: Reed Books, 1991. 264 pp. ISBN 0-7301-0314-5.

*Vertebrate Palaeontology of Australasia*, ed. by P. Vickers-Rich, J.M. Monaghan, R.F. Baird, and T.H. Rich. Lilydale, Vic.: Pioneer Design Studio, 1991. 1437 pp. ISBN 0-909674-36-1.

## Works of Darwin on CD-ROM

An exciting new multimedia CD-ROM allows scholars and students quick access to literature by and about Charles Darwin.

*The Darwin CD-ROM* contains complete texts and illustrations from *The Origin of Species*, *The Descent of Man*, and *The Voyage of the Beagle*, the first republication since the 1800s of the five-volume set *Zoology of the Voyage of the Beagle*, and the seminal 1859 paper by Darwin and Alfred Russel Wallace, "On the Tendency of Species to Form Varieties." Additionally, the full text and illustrations from Michael T. Ghiselin's *The Triumph of the Darwinian Method* is included, as well as a timeline of Darwin's life, original maps from the surveying voyages of the HMS Beagle and HMS Adventure, over 650 color and black & white images from a variety of sources, and a bibliography of over 1000 primary and secondary references. Sound recordings of many of the animals discussed in the texts can be heard at the touch of a key.

Search software, included on the CD, allows keyword and boolean searching of any word in the texts included, and index browsing and selection of specific texts or graphics from a pull-down menu. *The Darwin CD-ROM* runs on both Macintosh and IBM PCs and compatibles. A color monitor/graphics adaptor, CD player with audio jack, and external speakers or headphones for audio are necessary to take advantage of all the features available on the CD-ROM. *The Darwin CD-ROM* is published by Lightbinders, Inc., 2325 Third St., Suite 320, San Francisco, CA 94107 (800) 432-3766. Its price is a very reasonable \$99.95.

*continued from page 12*

Judy Warrick  
Tel 503/231-1301  
Fax 503/231-1368

### Address, Telephone, and Fax Changes

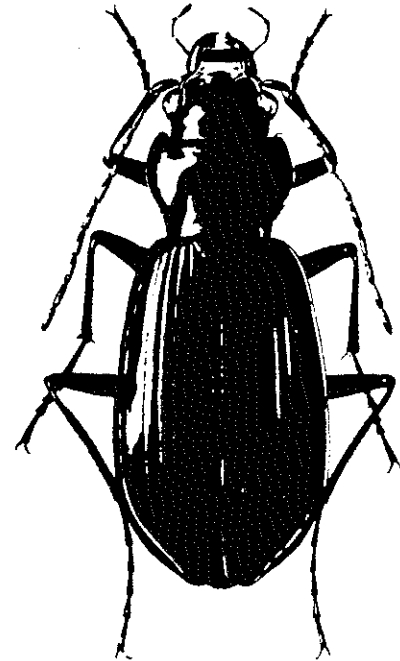
Carolyn C. O'Reilly  
Monsanto Company Information Center  
700 Chesterfield Parkway  
St. Louis, MO 63198  
Tel 314/537-6328  
Fax 314/537-7310

Announcing a new publication from the California Academy of Sciences

## Carabid Beetles (Insecta: Coleoptera: Carabidae) of the Queen Charlotte Islands, British Columbia

by David H. Kavanaugh

- \* Reviews the history of scientific research in the archipelago.
- \* Provides diagnosis, description, and geographical and habitat distributions of 62 predaceous ground beetle (carabid) species.
- \* Includes illustrated key for identification of adults of all species.
- \* Illustrates beetle habitats with 27 color photographs.
- \* Discusses the importance of carabid beetles in biogeography.
- \* Analyzes faunal affinities of carabid beetles and compares them with other insect groups and the archipelago's flora.
- \* Reconstructs the history of the carabid fauna and its implications for the biotic history of the archipelago.
- \* Discusses the glacial refugium controversy and the evidence provided by carabid beetles.
- \* Includes 158 bibliographic references.



Memoirs of the California Academy of Sciences, Number 16  
Paperbound, 8 1/2 X 11 inches, 113 pages, ISBN 0-940228-17-3

---

To order *Carabid Beetles (Insecta: Coleoptera: Carabidae) of the Queen Charlotte Islands, British Columbia*, please complete this form. All orders must be prepaid.

Name: \_\_\_\_\_

Address: \_\_\_\_\_

\_\_\_\_\_

\_\_\_\_\_

<i>Carabid Beetles</i>	No. of copies _____ @ \$25.00	\$ _____
CA residents add 8.5 % sales tax		\$ _____
Shipping and handling	No. of copies _____ @ \$2.25	\$ _____
	TOTAL SUBMITTED	\$ _____

Send to: Scientific Publications  
California Academy of Sciences  
Golden Gate Park  
San Francisco, CA 94118 USA

---

## New Member Profiles

### Fun Fun W. Cheng

Fun Fun is a graduate student in the University of Iowa library and information science program. She holds a B.A. in English from Carleton College. Fun Fun has worked as a library assistant at the Carleton Science Library, Minneapolis College of Art and Design, Arthur Andersen & Co., Fredrikson & Byron, P.A., and the Home & Building Division of Honeywell, Inc. She is currently working at the Hardin Health Science Library at the University of Iowa.

### Jeffrey D. Custard

Jeff is a new student member who is working on his M.L.I.S. degree at the University of Texas at Austin. His bachelor's degree is in human nutrition from Colorado State University. Jeff has had volunteer experience in a small medical library, and has worked in the Public Affairs Library at UT Austin. Currently, he is working in a co-op position at the IBM Austin Technical Library, and is the Vice President of the student chapter of SLA at UT Austin. Jeff hopes to work in a medical library upon completion of his master's.

### Georgia L. Finnigan

Georgia is President and Founder of The Information Store, Inc., a document retrieval service headquartered in San Francisco. Georgia has been a librarian in public, university, and special libraries and a member and supporter of SLA for 20+ years. She also serves on the Board of Directors for the Copyright Clearance Center. Georgia has an M.S.L.S. from the University of North Carolina and holds a degree in business from Pepperdine University.

### Praveena Raman

Praveena is Coordinator for Mediated Search Services at Massachusetts General Hospital. She has worked previously at Genetics Institute Inc., Cabot Corp., and Bull HN Information Systems Inc. She has an M.S. in library and information science, an M.Sc. in biophysics, and a B.Sc. in chemistry. She is Past-President of the Board of Directors of the New England Online Users Group and writes a column on advanced technology in its newsletter. She is also the current Liaison between the Science and Technology Division of SLA and the Medical Library Association.

### Maggie Rogers

Maggie is volunteer librarian for the Oregon Mycological Society, Portland, one of the oldest amateur mycological societies in the U.S. She also co-publishes the quarterly magazine *Mushroom, the Journal of Wild Mushrooming*. Maggie has worked previously in education and school libraries, including the Information Center of the Northwest Regional Educational Laboratory, but her real love has always been biology, botany, and now, fungi!

### Ann Chamberlain Roseberry

Ann is Information Services Consultant for the Columbia River Inter-Tribal Fisheries Commission in Portland, Oregon. CRITFC is a scientific and technical support group on tribal fishery issues for the Nez Perce tribe, the Confederated Tribes of the Umatilla Indian Reservation, the Confederated Tribes of the Warm Springs Reservation of Oregon, and the Confederated Tribes and Bands of the Yakima Indian Nation. She has a B.A. in humanities from Eastern Washington University, an A.M.L.S. from the University of Michigan, and an Ed.D. in post-secondary education from Portland State University.

### Wendy L. Wallace

Wendy is Librarian for the Central Environmental Resources Library of Merck & Co., Inc. of Rahway, New Jersey. She has an A.B. in biology from Wheaton College, an M.A. in biology from Montclair State College, and an M.L.S. from Rutgers University. She has held previous library positions at Woodward-Clyde Consultants, Inc., Ciba-Geigy Corp., and Bell Communications Research.

### Lara J. Wiggert

Lara is a Technical Service Assistant in the Biotechnology Information Center at the National Agricultural Library in Beltsville, Md. She has a B.S. in biology from Indiana University, Bloomington, and is currently working on an M.L.S. at Catholic University of America. Lara has worked as a Laboratory Research Technician at Brigham and Women's Hospital in Boston, and has completed some graduate work in food science and nutrition at Penn State.

---

## New Members

Donna J. Alexander  
R.D. #2 Box 96C  
Greenwich, NY 12834  
Tel 518/761-5389

James H. Anderson  
P. O. Box 7180  
Provo, UT 84602

Sherry Anderson  
4260 Brownsboro Road #E-40  
Winston, Salem, NC 27106  
Tel 919/748-2305  
Fax 919/748-2186

Winfred C. Ark  
2212 31 Avenue  
San Francisco, CA 94116

Linda Azen  
330 Regatta Way  
Seal Beach, CA 90740

Sylvia A. Beardsley  
Univ. of Wisconsin-Parkside  
P. O. Box 2000  
900 Wood Road  
Kenosha, WI 53141  
Tel 414/553-2143

Susan L. Beauregard  
17A Orchard Avenue  
Haverhill, MA 01830

Maxine A. Becker  
University of Guam  
School of Nursing  
UOG Station  
Mangilao, GU 96923  
Tel 671/734-9529  
Fax 671/734-1203

Laura J. Bontempo  
1403 Court Street #D  
Columbia, MD 65201

Joanne E. Braley  
5 S. Mortimer Avenue  
Elmsford, NY 10523

Maxine F. Brown  
1802 Inwood Avenue  
Silver Spring, MD 20902  
Tel 703/308-4486  
Fax 703/308-4496

Karen E. Catlin  
617 Myrtle Avenue  
Albany, NY 12208

Fun Fun W. Cheng  
304 S. Summit St. #202  
Iowa City, IA 52240

Veronika A. Conant  
3777 Independence Ave #7M  
Riverdale, NY 10463  
Tel 212/772-4192

Marsha A. Curry  
6813 Bayou Pines Drive  
Baton Rouge, LA 70820

Jeffry D. Custard  
5230 Thunder Creed Road  
#219  
Austin, TX 78759  
Tel 512/838-1060  
Fax 512/838-1072

Elizabeth M. Daniel  
168 Shattuck Ave. #260  
Berkeley, CA 94709  
Tel 510/526-3797  
Fax 510/526-3797

Carol DeBiak  
1130 N. Harlem Apt. B  
River Forest, IL 60305  
Tel 312/938-0300

Victor Desroches  
Canadian Agriculture Library  
Sir John Carling Building  
930 Carling Avenue  
Ottawa, ON Can K1A 0C5  
Tel 613/995-7829  
Fax 613/952-3813

June A. Ellis  
210 W. Hill St. #2  
Champaign, IL 61820

Paul C. Gallagher  
376 Broadway #15A  
New York, NY 10013

Michelle L. Godfrey  
1435 S. Limestone #101  
Lexington, KY 40503  
Tel 606/257-8777

Katherine B. Gully  
761 Cascade Avenue  
Boulder, CO 80302  
Tel 303/370-6362  
Fax 303/331-6492

Virginia A. Hammond  
13208 Trumpet Place  
Silver Spring, MD 20904  
Tel 301/428-4980  
Fax 301/428-4778

Jenny F. Harriman  
U.S. National Institutes of  
Health  
Library Bldg 10 - Room 1L21  
9000 Rockville Pike  
Bethesda, MD 20892  
Tel 301/496-1156  
Fax 301/402-0254

Gloria A. Huffman  
P. O. Box 271  
Santa Ana, CA 92702  
Tel 714/757-8704  
Fax 714/833-9694

Lynda J. Jones  
6897 Meadow Oak Drive  
Columbus, OH 43235

William F. Karnoscak  
1636 W. Roscoe #3  
Chicago, IL 60657  
Tel 312/942-6799  
Fax 312/942-3143

Joan L. Krinsky  
22 Creek Road #42  
Irvine, CA 92714



Edie C. Lacy  
Crawford Long Hospital of  
Emory University  
Medical Library  
550 Peachtree Street NE  
Atlanta, GA 30365  
Tel 404/686-2678  
Fax 404/686-4974

Grace E. Langley  
25 Magnetic Acres  
Mooresville, IN 46158

Kitty P. Liu  
Gene-Trak Systems  
Library  
31 New York Avenue  
Framingham, MA 01701  
Tel 508/872-3113  
Fax 508/879-6462

Victor Lorand  
1108 N. Main Street  
Hattiesburg, MS 39401

Jean F. Lucas  
2423 Regis Drive  
Davis, CA 95616

Arlene D. Mangino  
47 Daka Court  
Bloomfield, NJ 07003  
Tel 201/450-2294  
Fax 201/450-1936

Juliet F. Meyer  
9A Seymour Lane  
Ridgefield, CT 06877

Ruicha Mishra  
9450 NW 20th  
Sunrise, FL 33322  
Tel 305/674-2840  
Fax 305/674-2843

Patricia J. Morris  
University of Michigan  
Natural Science Library  
3140 Kraus Building  
Ann Arbor, MI 48109  
Tel 313/764-1494  
Fax 313/764-3829

Patricia A. Murphy  
Virginia Polytechnic Institute  
and State University Library  
Reference Dept.  
P. O. Box 90001  
Blacksburg, VA 24061

Pam L. Padgett  
Georgia-Pacific Corp.  
Tech. Info. G09  
Box 105605  
133 Peachtree St. NE  
Atlanta, GA 30348  
Tel 404/521-4638  
Fax 404/521-5093

Laurie A. Paulik  
U.S. Dept. of Agriculture  
Denver Wildlife Res. Center  
P.O. Box 25266  
Building 16 DFC  
Denver, CO 80225  
Tel 303/236-7873  
Fax 303/236-7863

Brenda R. Pfannenstiel  
6020 N. Wayne  
Gladstone, MO 64118  
Tel 816/235-1875  
Fax 816/235-5194

Priscilla Pride  
1700 Westwood Avenue SW  
Atlanta, GA 30310

Praveena V. Raman  
190 Florence Road  
Waltham, MA 02154  
Tel 617/726-8000  
Fax 617/726-6784

Geetha A. Rao  
2800 Wood Hollow Road  
Madison, WI 53711  
Tel 608/274-4330  
Fax 608/273-6968

Ann C. Roseberry  
Columbia River Inter-Tribal  
Coordinated Info System  
729 NE Oregon #200  
Portland, OR 97232  
Tel 503/238-0667  
Fax 503/238-7207

Dawn C. Rowan  
80-B Trinity Place  
Albany, NY 12202  
Tel 518/455-2644

Cheryl R. Rueby  
Matthews Book Co.  
Library Services Division  
11559 Rock Island Ct.  
St. Louis, MO 63043  
Tel 314/432-1400  
Fax 314/432-7044

Sara M. Rutter  
2415 Teel Avenue  
Lansin, MI 48910

Kathleen M. Sanders  
1301 Santa Fe Trail  
Emporia, KS 66801

Cynthia D. Sandlin  
1712 Brookwood Circle  
Archdale, NC 27263

Angela M. Scarfia  
Fisons Pharmaceuticals  
Research Library  
P.O. Box 1710  
Rochester, NY 14603  
Tel 716/475-9000

Dawn R. Swalboski  
Mayo Medical Library  
Learning Resource Center  
119 Student Center  
Rochester, MN 55905  
Te. 507/284-4847

Carol J. Tang  
1411 Greywall Lane  
Wynnewood, PA 19096  
Tel 215/596-8967  
Fax 215/222-5060

Teri L. Tarita  
Pacific Salmon Commission  
600 - 1155 Robson Street  
Vancouver, BC Can V6E 1B3  
Tel 604/684-8081  
Tel 604/666-8707

A valuable list  
of over 1,000  
bibliographic entries  
compiled by  
divisions of the  
Special Libraries  
Association

## tools of the profession

2ND EDITION, 1991  
ISBN 0-87111-378-3 192 pp.

Sixteen SLA Divisions consider these true "tools" of the information profession, key resources in their areas of expertise.

*Don't wait to order this popular reference tool!*



Contact SLA's Order Department at  
(202)234-4700.  
Tell them you saw this ad in your bulletin.



### Savage Information Services

Positions available in the library of a growing biotechnology company in Ventura County, Calif. for candidates with a life sciences/chemistry/pharmaceutical background or with a patent/legal sources background.

Database searching skills important. Relocation assistance available. Excellent compensation and benefits package. No fee to applicant. Qualified candidates should contact, as soon as possible, or fax a resume to:

Savage Information Services  
2510 W. 237th St., Suite #200  
Torrance, CA 90505  
(310) 530-4747  
(310) 530-0049 (fax)



**NEW!**

SLA's Self-Study Program

### "Subject Indexing: An Introductory Guide"

This self-study program is available  
in a workbook format.

For further information contact SLA's Professional  
Development Section, 202/234-4700.

SLA's Self-Study Program

### "Database Design: An Introductory Guide to Planning and Creating a Database"

This self-study program is available  
in a workbook format.

For further information contact SLA's Professional  
Development Section, 202/234-4700.

Library Students, Special Librarians/Information Specialists  
Get The Latest On These Basics:

- management techniques;
- professional activities;
- technical services;
- user services; and
- collections.

### Special Libraries and Information Centers: An Introductory Text

The *NEW*, 2nd Edition by Ellis Mount  
ISBN 0-87111-354-6 \$29.50  
Available *RIGHT NOW!* Order Yours Today!



Contact SLA's Order Department at  
(202)234-4700.  
Tell them you saw this ad in your bulletin.

*continued from page 9*

Susan M. Vazakas  
Boston University Science  
Library  
38 Cummington Street  
Boston, MA 02215  
Tel 617/353-9475  
Fax 617/353-3470

Wendy L. Wallace  
P. O. Box 264  
Sparta, NJ 07871

Catherine Warren  
Cornell University  
Medical College Library  
1200 York Avenue  
New York, NY 10021  
Tel 212/746-6063

Russlene Waukechon  
Texas Dept. of MHMR  
Library  
P.O. Box 12668  
Austin, TX 78711  
Tel 512/465-4621

Lara J. Wiggert  
12405 Eastbourne Drive  
Silver Spring, MD 20904

Susan Young  
120 St. Patrick #1009  
Toronto, ON Can M5T 2X7

Dora Zia  
2227 Wheeler Road  
Raleigh, NC 27607

## Updates

### Address Changes

Karen L. Bledsoe  
D-5 Medical Duke  
Greenville, NC 27834

Olga Carman  
4413 Nichols Road  
Oxford, OH 45056

Marsha A. Curry  
6813 Bayou Pines Drive  
Biloxi, MS 39532

Michiko Kobayashi Duda  
3543 Flintwood Drive  
Santa Rosa, CA 95404

Connie D. Dalrymple  
1119 Halls Corners Road  
Attica, NY 14011

Verla E. Empey  
Wellesley Hospital Library  
160 Wellesley Street E  
Toronto, ON Can M4Y 1J3  
Tel 416/926-7071

Rifki Fuchs  
308 Hackett Boulevard  
Albany, NY 12208

Donna P. Johnson  
Abbott/Northwestern Hospital  
Library/Media Services  
800 E. 28 Street  
Minneapolis, MN 55407

Judith E. Levitt  
5051 Veranda Terrace  
Davis, CA 95616  
Tel 916/752-6205

Brian K. Lym  
U.S. Dept. of Agriculture  
Forest Service Pacific SW  
Forest & Range Station  
P.O. Box 245  
Berkeley, CA 94720

Sheila E. Moran  
60 Rogers Avenue  
Somerville, MA 02144

Bonnie L. Myers  
Cytogen Corporation Library  
201 College Road E-CN5309  
Princeton, NJ 08540

Pergamon Press Inc.  
Attn: Kim A. Cavellero  
395 Saw Mill River Road  
Elmsford, NY 10523  
Tel 914/592-7700

Nadine P. Pieniaszek  
Kent General Hospital  
Medical Library  
640 S. State Street  
Dover, DE 19901

Valda J. Poplak  
Centenary Health Centre  
Health Sciences Library  
2867 Ellesmere Road  
Scarborough ON Can M1E 4B9  
Tel 416/284-8131  
Fax 416/281-7323

Praveena V. Raman  
Massachusetts General Hospital  
Treadwell Library  
Fruit Street  
Boston, MA 02114  
Tel 617/726-8000  
Tel 617/726-6784

Nancy E. Selinger  
31000 Connecticut Avenue  
#135  
Washington, DC 20008  
Tel 301/496-3294

Sandra R. Schefris  
American Medical Association  
Library & Info. Mgt. Div.  
515 N. State Street  
Chicago, IL 60610

Marvelyn E. Fuller Thompson  
944 21 Avenue North #807  
Nashville, TN 37208  
Tel 615/327-6894  
Fax 615/327-6448

Wei Wei  
965 Bethany Drive  
Scotts Valley, CA 95066

Glenna J. Westwood  
1265 6A Avenue South  
Lethridge, AB Can T1G 1G9

Elizabeth Winiarz  
Mass. Inst. of Technology  
Computer Literature Search  
Service  
Building 14S-M48  
Cambridge, MA 02139

Martha J. Wolf  
3908 Suffolk Circle  
Lexington, KY 40515

#### Address and Telephone Changes

Catherine M. La Tour  
American Assn. of Retired  
Persons  
Research Information Center  
601 E Street NW Rm A2-213  
Washington, DC 20049  
Tel 202/434-6243

Cynthia Supeau  
Rhone-Poulenc Rorer  
Central Research Library  
P.O. Box 1300  
Collegeville, PA 19426  
Tel 215/454-5699

#### Address and Fax Changes

Nancy B. Greer  
National Renewable Energy  
Laboratory  
1617 Cole Boulevard  
Golden, CO 80401  
Fax 303/231-1422

Margaret R. Willis  
Empire Blue Cross/Blue Shield  
Law Library  
622 Third Avenue  
New York, NY 10017  
Fax 212/986-8187

#### Telephone Number Changes

Carmen E. Bravo  
Tel 913/624-3682

Solange G. Gignac  
Tel 303/370-8014

Marjo A. Gray  
Tel 619/260-4600

Christine M. Kramer  
Tel 206/477-0697

Nancy E. Schraufnagel  
Tel 608/221-5390

Janette H. Schueller  
Tel 206/528-3372

Beverly A. Taugher  
Tel 415/561-8500

Loretta D. Ulincy  
Tel 301/496-6097

#### Fax Number Changes

Alta Beach  
Fax 518/473-8496

Mary Gilligan  
Fax 212/869-6741

Nancy B. Greer  
Fax 303/231-1422

Carolyn A. Hough  
Fax 313/361-8073

Dianne Juchimek  
Fax 315/470-6512

Bridget A. Kelly  
Fax 919/551-2224

Joyce Marson  
Fax 213/260-5748

Linda M. Ordogh  
Fax 514/398-3890

Karen J. Patrias  
Fax 301/496-2809

Julia Perez  
Fax 517/336-1445

Fred W. Roper  
Fax 803/777-6938

Lucy M. Rowland  
Fax 404/542-6523

Douglas L. Varner  
Fax 415/923-6597

Eileen Welch  
Fax 301/436-8391

Margaret R. Willis  
Fax 212/986-8187

Valerie Eslyn Wolford  
Fax 919/549-4168

#### Telephone and Fax Changes

Beth E. Barnes  
Tel 416/677-0831  
Fax 416/677-9595

Jeanne Becker  
Tel 212/639-8487  
Fax 212/717-3048

Katherine C. Chow  
Tel 404/639-3396  
Fax 404/639-1160

Estelle A. Davis  
Tel 212/650-8246  
Fax 212/450-7426

Jane Potter Gates  
Tel 301/504-6559  
Fax 301/504-5472

Christine De Golyer  
Tel 716/475-6123  
Fax 716/415-6490

Ruth E. Lewis  
Tel 314/935-5405  
Fax 314/935-4046

Sandrallynn Morasco  
Tel 617/252-9385  
Fax 617/252-9296

Valda J. Poplak  
Tel 416/284-8131  
Fax 416/281-7323

Patricia T. Sulouff  
Tel 315/443-2160  
Fax 315/443-5549

Candia N. Thew-Johnson  
Tel 316/261-2629  
Fax 316/261-2608

**DARWIN**  
**Multimedia CD-ROM for MACs and PCs**  
Created by Pete Goldie, Ph.D.

Announcing DARWIN, the first electronic publication of the collected works of Charles Darwin. Recommended for pleasure and education, for family entertainment and scholarly research, this CD-ROM is suitable for all ages. Includes the complete text and original illustration of Darwin's "The Voyage of the Beagle", "Origin of Species", and "The Descent of Man"; the seminal manuscript published by Charles Darwin and Alfred Russel Wallace in 1859; Michael T. Ghiselin's award winning book "Triumph of the Darwinian Method"; all in addition to the first re-publication since the 1800's of the original specimens collected by Darwin, the five volume set "Zoology of the Voyage of the Beagle". With contributions by distinguished naturalists, librarians, and scholars from throughout the nation, DARWIN brings together natural sound recordings, original maps from the surveying voyages of the HMS Beagle and the HMS Adventure, over 650 illustrations, and much much more; DARWIN is an invaluable source of information. DARWIN allows you to access text, images, and sounds almost instantly. A multimedia CD-ROM for use on both Mac's and PC's, DARWIN gives you the capability to search for dates, subjects, authors, birds, animals, plants, and more, all at the touch of a button!

Features included on DARWIN:

- \* Charles Darwin's complete texts and original illustrations of:
  - "The Voyage of the Beagle", final edition.
  - "The Origin of Species", 6th and final edition.
  - "The Descent of Man", final edition.
- \* Manuscript published by Charles Darwin and Alfred Russel Wallace in 1859, outlining the theory of evolution.
- \* "Triumph of the Darwinian Method", a guide to the study of Darwin, by Michael T. Ghiselin (winner of the Pfizer Award of the History of Science Society).
- \* The Darwin Timeline, detailing the significant events in his life.
- \* A Darwin bibliography of over 1000 primary and secondary references.
- \* Original maps from the surveying voyages of the HMS Beagle and the HMS Adventure.
- \* Over 650 color and black & white images.
- \* Natural sound recordings from the Cornell University Laboratory of Ornithology.
- \* Illustrations of the original specimens from the "Zoology of the Voyage of the HMS Beagle".
- \* Plus never-before published material from other distinguished naturalists.

SUGGESTED RETAIL PRICE ----- \$99.95

For more information  
or to place your order, write or call:

LIGHTBINDERS, Inc.  
2325 Third Street - Suite 320  
San Francisco, CA 94107

(415) 621-5746  
(800) 43-CDROM



---

## Job Announcements

### USER SERVICES LIBRARIAN

Natural history library in museum in Golden Gate Park, San Francisco, seeks an Assistant Librarian for User Services. Provides reference services including computer-based searching and bibliographical instruction; supervises circulation & collection maintenance operations; collection development in assigned areas; and original and copy cataloging on OCLC (ca. 8 hrs/wk). M.L.S. from A.L.A.-accredited library school required; college-level courses in natural sciences or comparable work experience preferred. \$21,786 plus excellent benefits. Send letter of interest and resume by May 25, 1992 to: Human Resources Dept., California Academy of Sciences, Golden Gate Park, San Francisco, CA 94118. Refer to Job #9224. EOE

### BIOTECHNOLOGY/CHEMICAL LITERATURE SEARCHER

Rapidly expanding biotechnology firm in Southern California seeks an experienced literature searcher with specialization in life sciences, pharmacology, chemistry and/or biotechnology. Excellent staff position. Superlative benefits, relocation expense allowance. Salary range \$40K-\$50K. Contact: Library Associates (310) 289-1067; FAX (310) 289-9635.

### PATENT SEARCHER

Literature searcher with patent searching experience for challenging position with a large biotechnology firm located in Southern California. MLS desired but not essential. Knowledge of all patent databases, with an emphasis in the sciences. Excellent staff position for in-house legal dept. Salary range from \$40K-\$50K. Superlative benefits, relocation allowance. Contact: Library Associates (310) 289-1067; FAX (310) 289-9635.

---

Biological Sciences Division  
Special Libraries Association  
c/o Steven L. Sowell, Asst. Editor  
*Biofeedback*  
1901 Ruby Lane  
Bloomington, IN 47401

Non-Profit Organization U.S. Postage PAID Bloomington, IN Permit No. 274
---